

## Mount a harddisk of a Dreambox 800 to another one

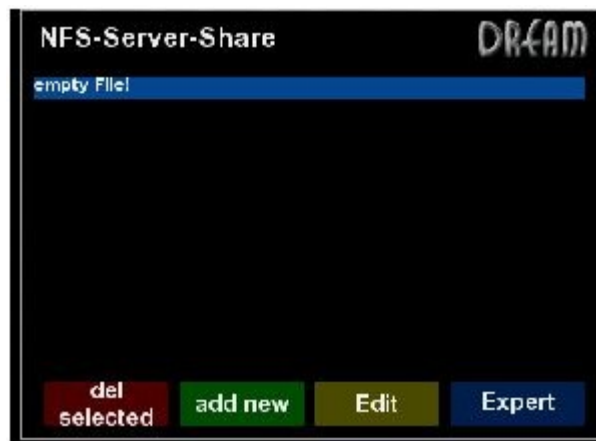
One way is the mount with NFS:

### Serverbox:

First you have to install the plugin "enigma2-plugin-newnigma2-nfseditor" with the online installer. If your box is not connected to the World Wide Web you can download the latest version of the plugin here: [Newnigma stable feed](#) and install it manually from /tmp,

You will find the plugin on the Box here:

- Blue Panel (Blue Button)
- NewNigma2 Service
- Environment Settings
- NFS Editor



- green button for new settings
- Harddisk - if the harddisk should be mounted, or
- movie if only the moviefolder should be mounted

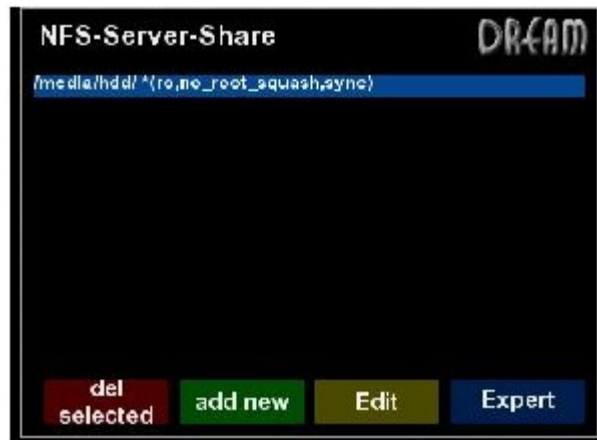


- accept with OK (Green Button)

I selected the hddisk.

Now you will get an OSD-Message to restart the NFS-Server – confirm with „yes“.

Now you will find the Settings in the NFS-Sever-Share:



with the yellow button you can edit the share settings:



IP Freigabe:	enable
IP Zugriff:	IP of your client Box.
Netmask:	netmask of your network, eg. Homenetwork: 255.255.255.0
Read/Write	chosse readonly or read/write. If read/write you can make eg. recordings by using the timer from the clientbox
subtree:	posibility to supfolders on the clientbox
root_sqash:	standardsetting: no_root_squash

Save with the green button

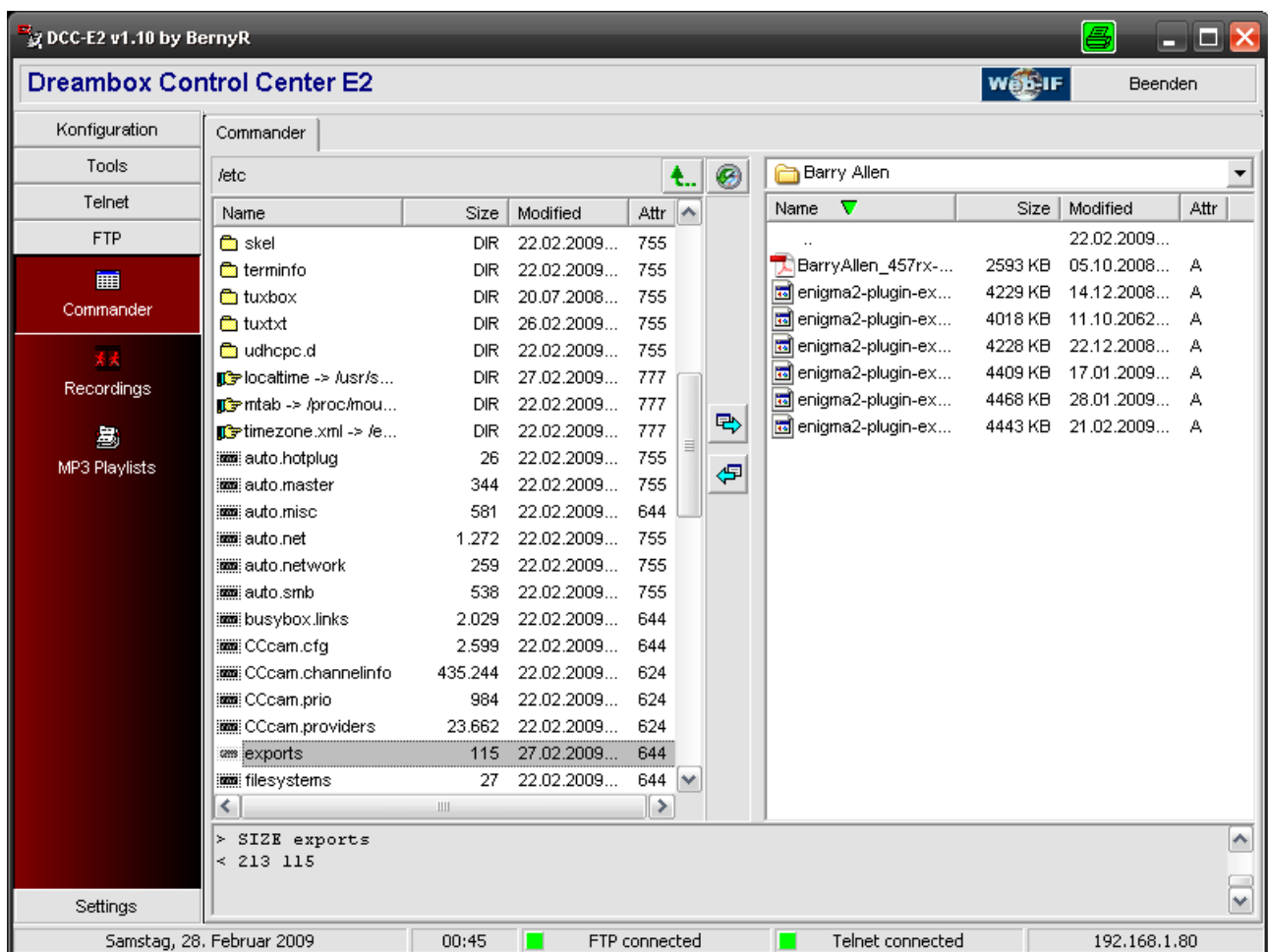
Now you have two settings – a new setting was created.



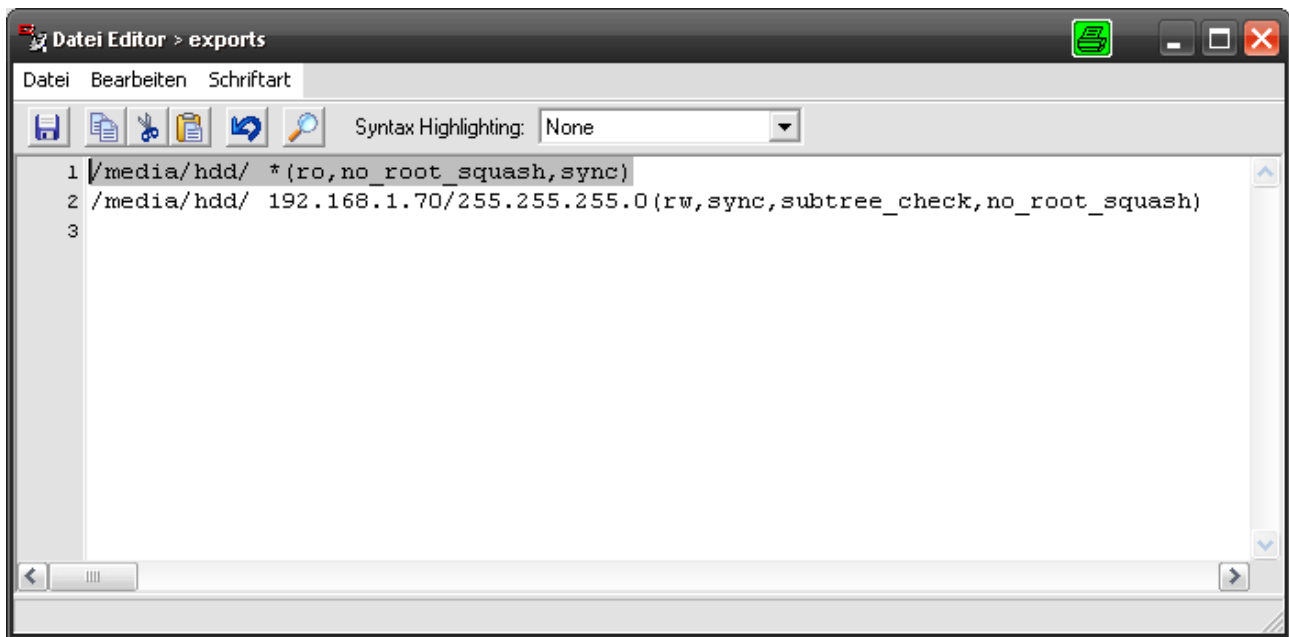
If you want, you can delete the first setting (marked) with the red button.

If you have problems with the subnetmask – only 255.255.255.001 could be typed or you want to change the settings manually, You can use a FTP software with a linux compliant editor: eg. [Dreambox Control Center](#)

You will find the settings in /etc in the file exports.



Edit the file with right click – edit. Now you can change the settings manually or create a new one.



I erased the first line:



now the settings on the serverbox are done.

## Clientbox:

### Using the mountmanger

If the the „enigma2-plugin-newnigma2-mountmanager“ is not included in your image you have to install it with the onlineinstaller. If your box is not connected to the World Wide Web you can download the latest version plugin here: [Newnigma stable feed](#) and install it manually from /tmp,

After installing you will find the plugin on the Box here:

- Blue Panel (Blue Button)
- NewNigma2 Service
- Environment Settings
- Mountmanager

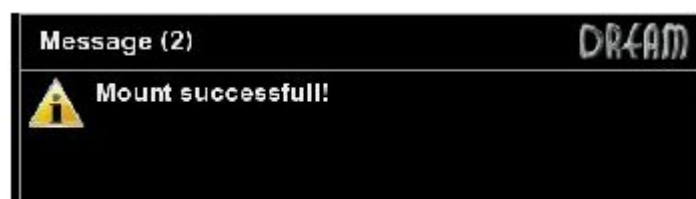


- yellow Button to edit the settings:

name: type your share name, eg. DM800-Server  
filesystem: nfs  
IP: IP of the Serverbox  
Path: Path you want to share from your serverbox: /media/hdd  
Destination: mountpoint in the serverbox, eg. /media/DM800Server (the mountpoint will be created automatically, you can also create the mountpoint manually by using DCC)  
Option: like your settings on your serverbox: rw, nfs  
User: root (standard user)  
Password: dreambox (standard password)  
Automount: on: the clientbox will connect to the serverbox when starting  
off: the clientbox must be connected to the serverbox manually (mount in mountmanager)

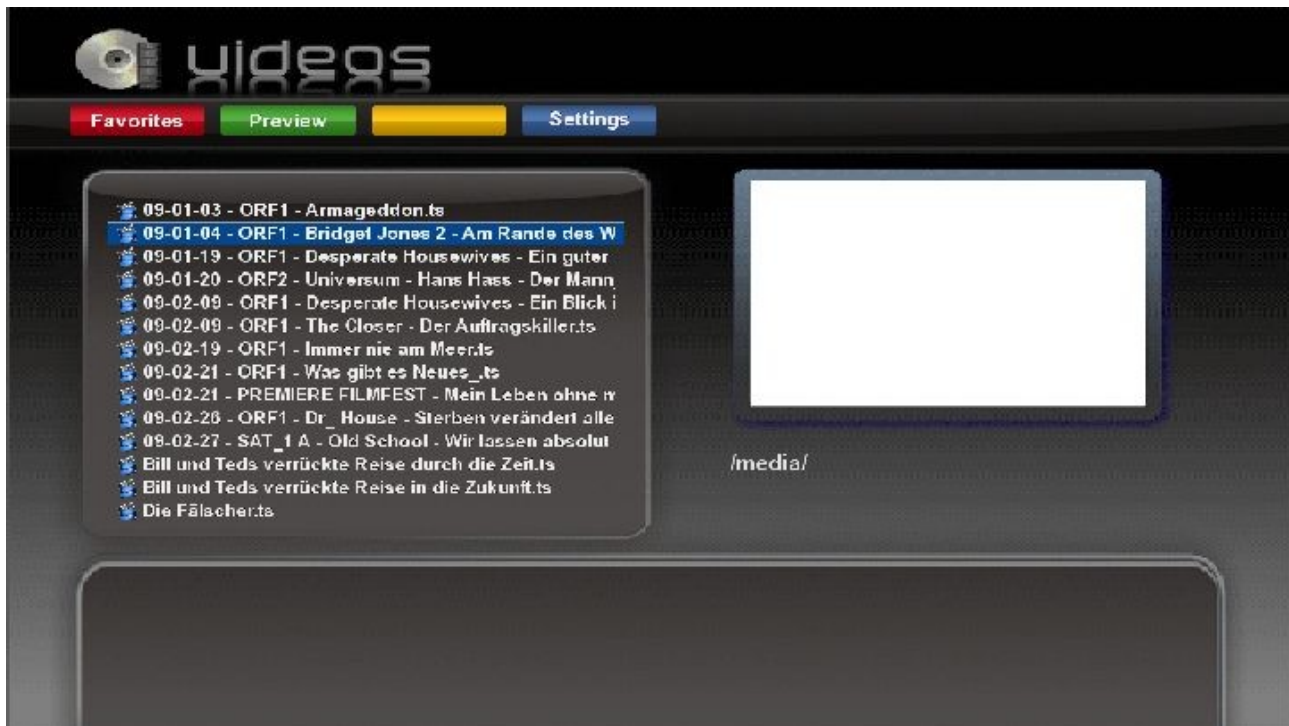
Save with the green button

Mount with the green button



Start eg. the Mediacenter Plugin with „my videos“ and navigate to internal flash/media/DM800Server.

Now you can see the files of your serverbox and you can start the recordings with OK.



Have fun

Fred Bogus Trumper, 2009-02-28